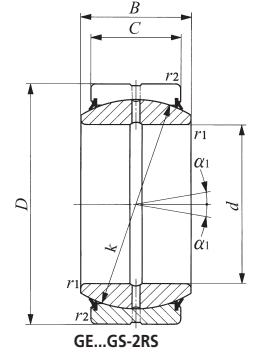
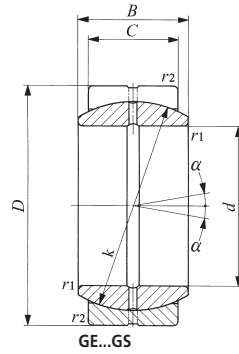
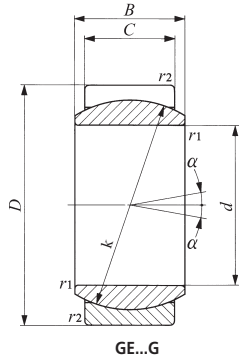
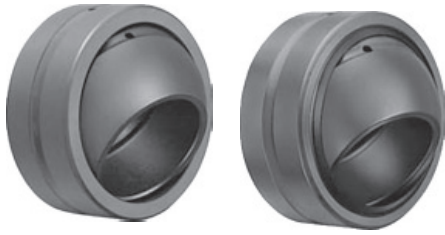


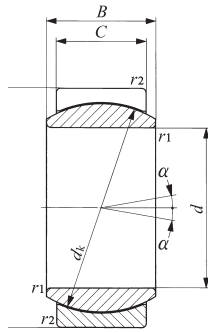
קוטר ציר [מ"מ]	מק"ט		מידות [מ"מ]					זווית הטיה מותרת במעלות		משקל	עומסים [kgf]	
	אטום		d	D	B	C	K	$\alpha$	$\alpha_1$	[ק"ג]	Cd	Cs
4	GE4E	-	4	12	5	3	8	16	-	0.003	240	1440
5	GE5E	-	5	14	6	4	10	13	-	0.004	400	2400
6	GE6E	-	6	14	6	4	10	13	-	0.004	400	2400
8	GE8E	-	8	16	8	5	13	15	-	0.008	650	3900
10	GE10E	-	10	19	9	6	16	12	-	0.012	960	5760
12	GE12E	-	12	22	10	7	18	11	-	0.017	1260	7560
15	GE15ES	GE15ES-2RS	15	26	12	9	22	8	5	0.032	1980	11900
17	GE17ES	GE17ES-2RS	17	30	14	10	25	10	7	0.049	2500	15000
20	GE20ES	GE20ES-2RS	20	35	16	12	29	9	6	0.065	3480	20900
25	GE25ES	GE25ES-2RS	25	42	20	16	35.5	7	4	0.115	5680	34100
30	GE30ES	GE30ES-2RS	30	47	22	18	40.7	6	4	0.16	7330	44000
35	GE35ES	GE35ES-2RS	35	55	25	20	47	6	4	0.258	9400	56400
40	GE40ES	GE40ES-2RS	40	62	28	22	53	7	4	0.315	11700	70000
45	GE45ES	GE45ES-2RS	45	68	32	25	60	7	4	0.413	15000	90000
50	GE50ES	GE50ES-2RS	50	75	35	28	66	6	4	0.56	18500	111000
60	GE60ES	GE60ES-2RS	60	90	44	36	80	6	3	1.1	28800	173000
70	GE70ES	GE70ES-2RS	70	105	49	40	92	6	4	1.54	36800	221000
80	GE80ES	GE80ES-2RS	80	120	55	45	105	6	4	2.29	47300	284000
90	GE90ES	GE90ES-2RS	90	130	60	50	115	5	3	2.82	57500	345000
100	GE100ES	GE100ES-2RS	100	150	70	55	130	7	5	4.43	71500	429000
110	GE110ES	GE110ES-2RS	110	160	70	55	140	6	4	4.94	77000	462000
120	GE120ES	GE120ES-2RS	120	180	85	70	160	6	4	8.12	112000	672000
140	GE140ES	GE140ES-2RS	140	210	90	70	180	7	5	11.4	126000	756000
160	GE160ES	GE160ES-2RS	160	230	105	80	200	8	6	14.4	160000	960000
180	GE180ES	GE180ES-2RS	180	260	105	80	225	6	5	18.9	180000	1080000
200	GE200ES	GE200ES-2RS	200	290	130	100	250	7	6	28.1	250000	1500000

מיוצר עד קוטר ציר 300 מ"מ

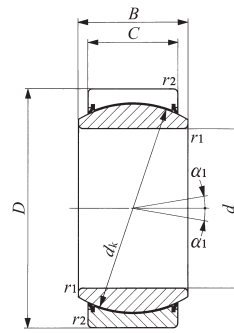


קוטר ציר [מ"מ]	מק"ט		מידות [מ"מ]					זווית הטיה מותרת במעלות		משקל [ק"ג]	עומסים [kgf]	
	אטום		d	D	B	C	K	$\alpha$	$\alpha_1$		Cd	Cs
6	GE6G	-	6	16	9	5	13	21	-	0.01	650	3,900
8	GE8G	-	8	19	11	6	16	21	-	0.015	960	5,760
10	GE10G	-	10	22	12	7	18	18	-	0.022	1,260	7,560
12	GE12G	-	12	26	15	9	22	18	-	0.041	1,980	11,900
15	GE15GS	GE15GS-2RS	15	30	16	10	25	16	13	0.059	2,500	15,000
17	GE17GS	GE17GS-2RS	17	35	20	12	29	19	16	0.083	3,480	20,900
20	GE20GS	GE20GS-2RS	20	42	25	16	35.5	17	16	0.155	5,680	34,100
25	GE25GS	GE25GS-2RS	25	47	28	18	40.7	17	15	0.215	7,330	44,000
30	GE30GS	GE30GS-2RS	30	55	32	20	47	17	16	0.33	9,400	56,400
35	GE35GS	GE35GS-2RS	35	62	35	22	53	16	15	0.4	11,700	70,000
40	GE40GS	GE40GS-2RS	40	68	40	25	60	17	14	0.515	15,000	90,000
45	GE45GS	GE45GS-2RS	45	75	43	28	66	15	13	0.66	18,500	111,000
50	GE50GS	GE50GS-2RS	50	90	56	36	80	17	16	1.5	28,800	173,000
60	GE60GS	GE60GS-2RS	60	105	63	40	92	17	15	2.05	36,800	221,000
70	GE70GS	GE70GS-2RS	70	120	70	45	105	16	14	3	47,300	284,000
80	GE80GS	GE80GS-2RS	80	130	75	50	115	14	13	3.6	57,500	345,000
90	GE90GS	GE90GS-2RS	90	150	85	55	130	15	14	5.41	71,500	429,000
100	GE100GS	GE100GS-2RS	100	160	85	55	140	14	12	6.15	77,000	462,000
110	GE110GS	GE110GS-2RS	110	180	100	70	160	12	11	9.7	112,000	672,000
120	GE120GS	GE120GS-2RS	120	210	115	70	180	16	15	15.5	126,000	756,000
140	GE140GS	GE140GS-2RS	140	230	130	80	200	16	15	19.2	160,000	960,000
160	GE160GS	GE160GS-2RS	160	260	135	80	225	16	14	25.4	180,000	1,080,000
180	GE180GS	GE180GS-2RS	180	290	155	100	250	14	13	34.7	250,000	1,500,000
200	GE200GS	GE200GS-2RS	200	320	165	100	275	15	14	43.8	275,000	1,650,000
220	GE220GS	GE220GS-2RS	220	340	175	100	300	16	14	51.3	300,000	1,800,000
240	GE240GS	GE240GS-2RS	240	370	190	110	325	15	14	66.1	358,000	2,150,000
260	GE260GS	GE260GS-2RS	260	400	205	120	350	15	14	81.8	420,000	2,520,000
280	GE280GS	GE280GS-2RS	280	430	210	120	375	15	14	97.4	450,000	2,700,000

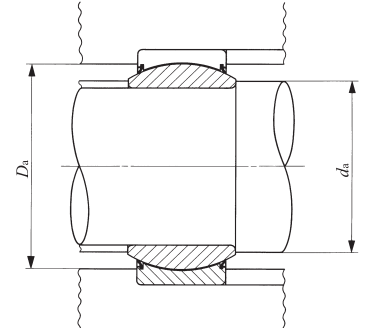
מיוצר עד קוטר ציר 300 מ"מ



GE...EC

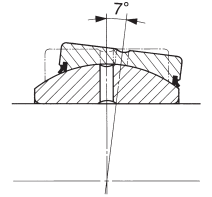
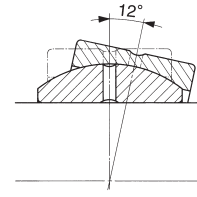
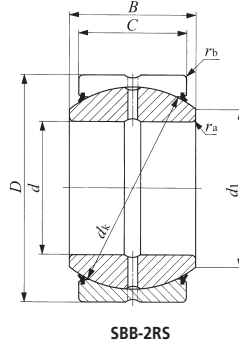
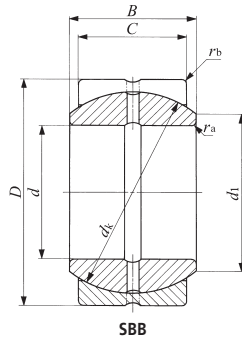


GE...EC-2RS



קוטר פנימי [מ"מ]	מק"ט	מידות [מ"מ]						זווית נטיה		עומסים [kgf]		משקל [ק"ג]
		אטום	d	D	B	C	K	$\alpha$	$\alpha1$	דינמי Cd	סטטי Cs	
15	GE 15EC		15	26	12	9	22	8		1980	4950	0.032
17	GE 17EC		17	30	14	10	25	10		2500	6250	0.049
20	GE 20EC		20	35	16	12	29	9		3480	8700	0.065
25	GE 25EC		25	42	20	16	35.5	7		5680	14200	0.115
30	GE 30EC	GE 30EC-2RS	30	47	22	18	40.7	6	4	7330	18300	0.160
35		GE 35EC-2RS	35	55	25	20	47		4	9400	23500	0.258
40		GE 40EC-2RS	40	62	28	22	53		4	11700	29200	0.315
45		GE 45EC-2RS	45	68	32	25	60		4	15000	37500	0.413
50		GE 50EC-2RS	50	75	35	28	66		4	18500	46200	0.560
60		GE 60EC-2RS	60	90	44	36	80		3	28800	72000	1.10
70		GE 70EC-2RS	70	105	49	40	92		4	36800	92000	1.54

מיסבי תפוח ללא שימון (סיומת EC) מתאימים לעבודה בתחום טמפרטורת  $-30^{\circ}\text{C}$  --  $+80^{\circ}\text{C}$



קוטר ציר [מ"מ] [אינץ']	מק"ט אטום	מידות [מ"מ]										עומסים [kgf]		משקל [ק"ג]
		d		D		B		C		dK		Cd	Cs	
12.700 (1/2)	SBB 8	1/2	12.700	7/8	22.225	0.437	11.10	0.375	9.52	0.709	18	1710	10300	0.02
15.875 (5/8)	SBB 10	5/8	15.875	1-1/16	26.988	0.547	13.89	0.469	11.91	0.906	23	2740	16400	0.036
19.050 (3/4)	SBB 12 SBB 12-2RS	3/4	19.050	1-1/4	31.750	0.656	16.66	0.562	14.27	1.083	27.5	3930	23600	0.057
22.225 (7/8)	SBB 14 SBB 14-2RS	7/8	22.225	1-7/16	36.512	0.765	19.43	0.656	16.66	1.260	32	5330	32000	0.088
25.400 (1)	SBB 16 SBB 16-2RS	1	25.400	1-5/8	41.275	0.875	22.22	0.750	19.05	1.417	36	6860	41100	0.125
31.750 (1-1/4)	SBB 20 SBB 20-2RS	1-1/4	31.750	2	50.800	1.093	27.76	0.937	23.80	1.772	45	10700	64300	0.234
34.925 (1 3/8)	SBB 22 SBB 22-2RS	1-3/8	34.925	2-3/16	55.562	1.187	30.15	1.031	26.19	1.929	49	12800	77000	0.349
38.100 (1-1/2)	SBB 24 SBB 24-2RS	1-1/2	38.100	2-7/16	61.912	1.312	33.32	1.125	28.58	2.165	55	15700	94300	0.424
44.450 (1-3/4)	SBB 28 SBB 28-2RS	1-3/4	44.450	2-13/16	71.438	1.531	38.89	1.312	33.32	2.52	64	21300	128000	0.649
50.800 (2)	SBB 32 SBB 32-2RS	2	50.800	3-3/16	80.962	1.750	44.45	1.500	38.10	2.874	73	27800	167000	0.939
57.150 (2-1/4)	SBB 36 SBB 36-2RS	2-1/4	57.150	3-9/16	90.488	1.969	50.01	1.687	42.85	3.228	82	35100	211000	1.32
63.500 (2-1/2)	SBB 40 SBB 40-2RS	2-1/2	63.5	3-15/16	100.012	2.187	55.55	1.875	47.62	3.583	91	43300	260000	1.85
69.850 (2-3/4)	SBB 44 SBB 44-2RS	2-3/4	69.85	4-3/8	111.125	2.406	61.11	2.062	52.37	3.937	100	52400	314000	2.44
76.200 (3)	SBB 48 SBB 48-2RS	3	76.200	4-3/4	120.65	2.625	66.68	2.25	57.15	4.331	110	62900	377000	3.12
82.550 (3-1/4)	SBB 52 SBB 52-2RS	3-1/4	82.550	5-1/8	130.175	2.844	72.24	2.437	61.9	4.685	119	73700	442000	3.92
88.900 (3-1/2)	SBB 56 SBB 56-2RS	3-1/2	88.900	5-1/2	139.7	3.062	77.77	2.625	66.68	5.039	128	85300	512000	4.83
95.250 (3-3/4)	SBB 60 SBB 60-2RS	3-3/4	95.250	5-7/8	149.225	3.281	83.34	2.812	71.42	5.394	137	97900	587000	5.87
101.600 (4)	SBB 64 SBB 64-2RS	4	101.600	6-1/4	158.75	3.5	88.9	3	76.2	5.748	146	111000	668000	7.07
107.950 (4-1/4)	SBB 68 SBB 68-2RS	4-1/4	107.950	6-5/8	168.275	3.719	94.46	3.187	80.95	6.102	155	125000	753000	8.46
114.300 (4-1/2)	SBB 72 SBB 72-2RS	4-1/2	114.300	7	177.8	3.937	100	3.375	85.72	6.457	164	141000	844000	9.94
120.650 (4-3/4)	SBB 76 SBB 76-2RS	4-3/4	120.650	7-3/8	187.325	4.156	105.56	3.562	90.47	6.811	173	157000	939000	11.6
127.000 (5)	SBB 80 SBB 80-2RS	5	127.000	7-3/4	196.85	4.375	111.12	3.75	95.25	7.205	183	174000	1050000	13.5
152.400 (6)	SBB 96 SBB 96-2RS	6	152.400	8-3/4	222.25	4.75	120.65	4.125	104.78	8.15	207	217000	1300000	17.6