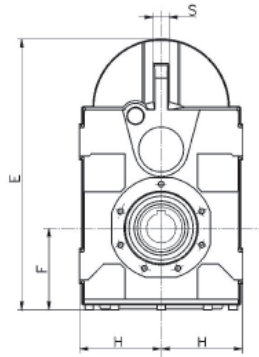
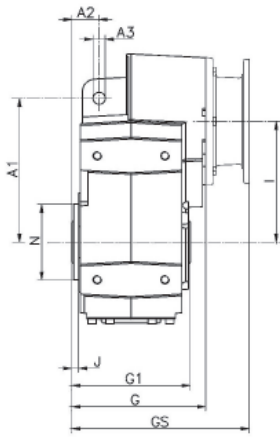




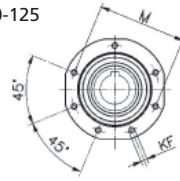
מהירות כניסה 1400 סל"ד

מקדם שירות SF=1

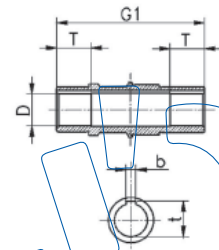
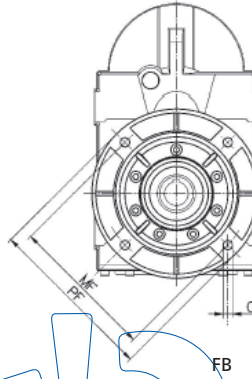
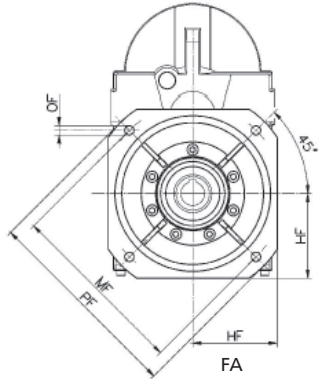
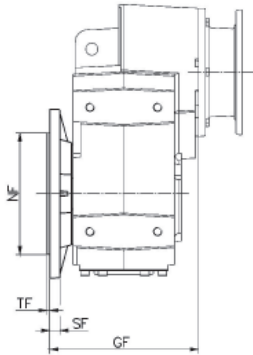
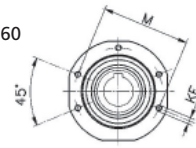
מהירות מקורבת (סל"ד)	יחס מקורב מסירה i	S050/053				S062/063				S082/083				S102/103				S122/123					
		מומנט מס' Nm	יחס i	הספק כניסה kW	מהירות סל"ד	מומנט מס' Nm	יחס i	הספק כניסה kW	מהירות סל"ד	מומנט מס' Nm	יחס i	הספק כניסה kW	מהירות סל"ד	מומנט מס' Nm	יחס i	הספק כניסה kW	מהירות סל"ד	מומנט מס' Nm	יחס i	הספק כניסה kW	מהירות סל"ד		
190	7									550	7.3	11.4	190.8										
180	8	170	8.6	3	162.3	330	8	6.3	175	600	8.1	11.4	173.6	850	8.1	16.1	173.6	1500	8.5	27	165		
160	9					360	9.5	5.8	146.7					900	8.8	15.5	158.3	1700	9.3	27.9	150.6		
140	10									650	9.9	10	140.8										
130	11	190	11.1	2.6	125.7	390	11.7	5.1	119.6	700	11.6	9.2	120.6	950	10.9	13.3	128.6	1900	11.4	25.4	122.6		
120	12									750	12.8	9	109.8	1000	12.8	12	109.8	2200	12.6	26.6	110.9		
110	13	210	13.7	2.3	102.5	420	13.4	4.8	104.8					1200	14	13.1	100.1	2400	13.8	26.5	101.2		
100	15	240	15.3	2.4	91.7	450	15.9	4.3	87.8	770	15.7	7.5	89										
90	17	240	16.3	2.3	86					770	17.3	6.8	80.9	1300	17.2	11.5	81.3	2600	17	23.4	82.4		
75	19	240	18.6	2	75.1	460	19.6	3.6	71.6					1400	19	11.3	73.7						
70	20									770	20.1	5.8	69.5										
65	22	260	21	1.9	66.6					800	22.1	5.5	63.3	1400	22.1	9.7	63.3	2800	21.3	20.1	65.9		
63	23					470	23.2	3.1	60.4									2900	23.3	19	60.1		
60	24	260	24.1	1.6	58.2					800	24	5.1	58.3	1500	24.3	9.4	57.7						
58	25	290	25.8	1.7	54	480	25.1	2.9	55.7														
55	26													1500	26.3	8.7	53.2	3000	26.2	17.5	53.5		
50	27	290	27.8	1.6	50.3	480	27.7	2.7	50.6	900	27.3	5	51.3										
48	28									900	28.7	4.8	48.8										
46	30	290	30	1.5	46.7	500	30	2.5	46.7					1500	29.9	7.7	46.9	3000	28.6	16	49		
43	33	300	32.6	1.4	43	540	33.9	2.4	41.3	1000	31.8	4.8	44.1	1500	32.4	7.1	43.2	3000	30.5	15	45.9		
40	35	330	36.5	1.4	38.3	600	36.6	2.5	38.3	1000	34.9	4.4	40.1	1400	34.9	6.1	40.1	3000	33.4	13.7	41.9		
35	40	350	39.9	1.3	35.1	600	39.4	2.3	35.6	1000	40.1	3.8	35	1500	38.3	6	36.6	3000	35.2	13	39.8		
32	43	350	42.6	1.3	32.8	600	43.6	2.1	32.1	1000	43.1	3.5	32	1300	44	4.5	31.8	3000	41.1	11.2	34.1		
30	47	350	47.2	1.1	29.7	600	46.1	2	30.4	1000	43.1	3.5	32	1600	47.1	5.2	29.7	3000	43.6	10.5	32.1		
27	50																						
26	52	350	52.3	1	26.8	600	53.5	1.7	26.2	1000	50.3	3	27.9					2400	49	7.5	28.5		
25	55					600	55	1.7	25.5									2600	53.8	7.4	26		
22	60	350	57.9	0.92	24.2	600	67.5	1.4	20.8	1000	54.3	2.8	25.8	1300	55.1	3.6	25.4						
20	65	350	72.8	0.73	19.2					1000	62	2.5	22.6	1600	59.4	4.1	23.6						
19	70	350	74.2	0.7	18.9					1000	67.5	2.3	20.7	1600	67.8	3.6	20.6	3000	66	6.9	21.2		
17	80					600	81.4	1.1	17.2	1000	74.2	2.1	18.9	1600	74.2	3.4	18.9	2700	71.1	5.9	19.7		
15	90	350	95.8	0.57	14.6					1600	81.4	3.1	17.2	1600	81.4	3.1	17.2	3000	87.3	5.4	16		
14	100																						
12	110	350	117.5	0.46	11.9					1000	91.5	1.7	15.3	1600	100.1	2.5	14						
11	120					600	126.4	0.74	11.1	1000	117.2	1.3	11.9	1600	110.5	2.3	12.7	3000	112.5	4.2	12.4		
10	130	350	137.5	0.4	10.2					1000	128.7	1.2	10.9	1600	128.7	1.9	10.9	3000	123.3	3.8	11.4		
9	140																						
8	150					600	150.9	0.62	9.3	1600	141.2	1.8	9.9	1600	141.2	1.8	9.9	3000	133.8	3.5	10.5		
7	180	350	177.5	0.31	7.9	600	185	0.51	7.6	1000	158.8	0.98	8.8	1600	158.8	0.98	8.8	3000	151.4	3.1	9.2		
6	200	350	198.5	0.28	7.1	600	217.8	0.43	6.4	1000	184.9	0.84	7.6	1600	173.8	1.4	8.1	3000	177.5	2.6	7.9		
6	220	350	217.6	0.25	6.4					1000	203.1	0.77	6.9	1600	203.1	1.2	6.9	3000	194.6	2.4	7.2		
5	250	350	256.3	0.21	5.5									1600	222.9	1.1	6.3						
5	280					600	267.2	0.35	5.2	1000	250.5	0.62	5.6	1600	222.9	1.1	6.3	3000	238.9	2	5.9		
4	320	350	314.2	0.17	4.5					1000	292.4	0.53	4.8	1600	274.2	0.91	5.1						
4	350									1000	315.7	0.49	4.4	1600	320.8	0.8	4.4						
4	400									1000	360.6	0.43	3.9	1600	345.6	0.72	4.1						
														1600	394.7	0.63	3.5						



080-100-125



050-060



פלאג' יציאה	מידות [מ"מ]	גודל ממסרה				
		S050	S060	S080	S100	S125
A1		158	170	218	278	346
A2		31.5	32	41	50	62
A3		14	14	14	22	22
D		30	35	40	50	60
D1		30	35	40	50	60
E		311	320	383	426	549
F		107	97	107	118	157
G		137.5	158.5	207	217.5	257
G1		120	140	180	210	240
H		90.5	96.5	112.5	130	165
I		125	143	170	180	235
J		6.5	8	12	10	12.5
KF		M8x16	M8x16	M10x20	M12x22	M14x28
M		105	105	130	165	185
N		90	90	110	130	150
S		15	15	20	20	26
T		30	35	42	50	70
b		8	10	12	14	18
t		33.3	38.3	43.3	53.8	64.4
b1		8	10	12	14	18
t1		33	38	43	53.5	64
FA	GF	153	172.5	227	247.5	
	HF	100	100	125	150	
	MF	215	215	265	300	
	NF	180	180	230	250	
	OF	14	14	14	18	
	PF	250	250	300	350	
	SF	12	12	15	16	
	TF	4	4	4	5	
FB	GF	153	172.5	227	247.5	287
	MF	165	165	215	265	300
	NF	130	130	180	230	250
	OF	11	11	14	14	18
	PF	200	200	250	300	350
	SF	12	12	15	16	18
	TF	3.5	3.5	4	4	5