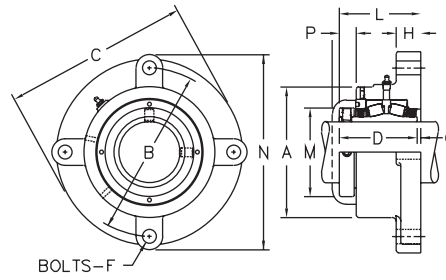


קוטר ציר [מ"מ]	מק"ט קבוע	מק"ט צף	מידות [מ"מ]													עומסים [N]		מהירות מירבית
			A	B	C	D	E	F	H	L קבוע	L צף	M	P	S	U	C ₀	C	
1	P-B22416H	PE-B22416H	39.67	111.1	150.8	65.09	52.4	10.0	22.2	79.4	84.1	50.8	13.5	15.9	39.7	66100	51200	3500
	P-B224M25H	PE-B224M25H	39.67	111.1	150.8	65.09	52.4	10.0	22.2	79.4	84.1	50.8	13.5	15.9	39.7	66100	51200	3500
1-3/16	P-B22419H	PE-B22419H	44.45	120.6	160.3	68.26	55.6	10.0	27.0	88.9	92.1	55.6	13.5	15.9	41.3	80500	60900	3000
	P-B22420H	PE-B22420H	44.45	120.6	160.3	68.26	55.6	10.0	27.0	88.9	92.1	55.6	13.5	15.9	41.3	80500	60900	3000
30	P-B224M30H	PE-B224M30H	44.45	120.6	160.3	68.26	55.6	10.0	27.0	88.9	92.1	55.6	13.5	15.9	41.3	80500	60900	3000
	P-B22423H	PE-B22423H	47.62	127.0	174.6	73.02	57.2	12.0	30.2	93.7	98.4	63.5	16.7	20.6	45.2	93200	64900	2750
35	P-B22424H	PE-B22424H	47.62	127.0	174.6	73.02	57.2	12.0	30.2	93.7	98.4	63.5	16.7	20.6	45.2	93200	64900	2750
	P-B224M35H	PE-B224M35H	47.62	127.0	174.6	73.02	57.2	12.0	30.2	93.7	98.4	63.5	16.7	20.6	45.2	93200	64900	2750
1-5/8	P-B22426H	PE-B22426H	53.98	139.7	187.3	79.38	63.5	12.0	33.3	108.0	111.1	69.8	16.7	20.6	48.4	127700	89800	2350
	P-B22427H	PE-B22427H	53.98	139.7	187.3	79.38	63.5	12.0	33.3	108.0	111.1	69.8	16.7	20.6	48.4	127700	89800	2350
40	P-B22428H	PE-B22428H	53.98	139.7	187.3	79.38	63.5	12.0	33.3	108.0	111.1	69.8	16.7	20.6	48.4	127700	89800	2350
	P-B224M40H	PE-B224M40H	53.98	139.7	187.3	79.38	63.5	12.0	33.3	108.0	111.1	69.8	16.7	20.6	48.4	127700	89800	2350
1-15/16	P-B22431H	PE-B22431H	57.15	158.8	212.7	79.38	63.5	16.0	44.4	115.9	115.9	74.6	16.7	23.8	48.4	147700	94300	2150
	P-B22432H	PE-B22432H	57.15	158.8	212.7	79.38	63.5	16.0	44.4	115.9	115.9	74.6	16.7	23.8	48.4	147700	94300	2150
45	P-B224M45H	PE-B224M45H	57.15	158.8	212.7	79.38	63.5	16.0	44.4	115.9	115.9	74.6	16.7	23.8	48.4	147700	94300	2150
	P-B224M50H	PE-B224M50H	57.15	158.8	212.7	79.38	63.5	16.0	44.4	115.9	115.9	74.6	16.7	23.8	48.4	147700	94300	2150
2-3/16	P-B22435H	PE-B22435H	63.5	171.4	225.4	84.14	65.1	16.0	41.3	127.0	127.0	85.7	19.8	23.8	52.4	197500	117400	1950
	P-B22436H	PE-B22436H	63.5	171.4	225.4	84.14	65.1	16.0	41.3	127.0	127.0	85.7	19.8	23.8	52.4	197500	117400	1950
55	P-B224M55H	PE-B224M55H	63.5	171.4	225.4	84.14	65.1	16.0	41.3	127.0	127.0	85.7	19.8	23.8	52.4	197500	117400	1950
	P-B22439H	PE-B22439H	69.85	181.0	235.0	88.9	68.3	16.0	44.4	139.7	139.7	92.1	21.4	23.8	55.6	238000	139700	1750
60	P-B22440H	PE-B22440H	69.85	181.0	235.0	88.9	68.3	16.0	44.4	139.7	139.7	92.1	21.4	23.8	55.6	238000	139700	1750
	P-B224M60H	PE-B224M60H	69.85	181.0	235.0	88.9	68.3	16.0	44.4	139.7	139.7	92.1	21.4	23.8	55.6	238000	139700	1750
2-11/16	P-B22443H	PE-B22443H	82.55	206.4	265.1	101.6	81.0	20.0	57.1	163.5	163.5	106.4	21.4	27.0	61.9	318000	185900	1500
	P-B22444H	PE-B22444H	82.55	206.4	265.1	101.6	81.0	20.0	57.1	163.5	163.5	106.4	21.4	27.0	61.9	318000	185900	1500
2-3/4	P-B22447H	PE-B22447H	82.55	206.4	265.1	101.6	81.0	20.0	57.1	163.5	163.5	106.4	21.4	27.0	61.9	318000	185900	1500
	P-B22448H	PE-B22448H	82.55	206.4	265.1	101.6	81.0	20.0	57.1	163.5	163.5	106.4	21.4	27.0	61.9	318000	185900	1500
65	P-B224M65H	PE-B224M65H	82.55	206.4	265.1	101.6	81.0	20.0	57.1	163.5	163.5	106.4	21.4	27.0	61.9	318000	185900	1500
	P-B224M70H	PE-B224M70H	82.55	206.4	265.1	101.6	81.0	20.0	57.1	163.5	163.5	106.4	21.4	27.0	61.9	318000	185900	1500
75	P-B224M75H	PE-B224M75H	82.55	206.4	265.1	101.6	81.0	20.0	57.1	163.5	163.5	106.4	21.4	27.0	61.9	318000	185900	1500
3-3/16	P-B22451H	PE-B22451H	95.25	254.0	330.2	111.12	87.3	24.0	57.2	190.5	190.5	127.0	23.8	41.3	67.5	403400	226800	1250
	P-B22455H	PE-B22455H	95.25	254.0	330.2	111.12	87.3	24.0	57.2	190.5	190.5	127.0	23.8	41.3	67.5	403400	226800	1250
3-7/16	P-B22456H	PE-B22456H	95.25	254.0	330.2	111.12	87.3	24.0	57.2	190.5	190.5	127.0	23.8	41.3	67.5	403400	226800	1250
	P-B224M80H	PE-B224M80H	95.25	254.0	330.2	111.12	87.3	24.0	57.2	190.5	190.5	127.0	23.8	41.3	67.5	403400	226800	1250
80	P-B224M85H	PE-B224M85H	95.25	254.0	330.2	111.12	87.3	24.0	57.2	190.5	190.5	127.0	23.8	41.3	67.5	403400	226800	1250
3-11/16	P-B22459H	PE-B22459H	107.95	298.4	387.4	128.59	101.6	24.0	66.7	215.9	215.9	150.0	27.0	57.2	77.8	609400	351800	1100
	P-B22463H	PE-B22463H	107.95	298.4	387.4	128.59	101.6	24.0	66.7	215.9	215.9	150.0	27.0	57.2	77.8	609400	351800	1100
3-15/16	P-B22464H	PE-B22464H	107.95	298.4	387.4	128.59	101.6	24.0	66.7	215.9	215.9	150.0	27.0	57.2	77.8	609400	351800	1100
	P-B224M90H	PE-B224M90H	107.95	298.4	387.4	128.59	101.6	24.0	66.7	215.9	215.9	150.0	27.0	57.2	77.8	609400	351800	1100
90	P-B224M90H	PE-B224M90H	107.95	298.4	387.4	128.59	101.6	24.0	66.7	215.9	215.9	150.0	27.0	57.2	77.8	609400	351800	1100
100	P-B224M100H	PE-B224M100H	107.95	298.4	387.4	128.59	101.6	24.0	66.7	215.9	215.9	150.0	27.0	57.2	77.8	609400	351800	1100
3-15/16	PL-B22463H	-	104.78	276.2	362.0	128.59	101.6	24.0	63.5	212.7	-	150.0	27.0	47.6	77.8			
	PL-B22464H	-	104.78	276.2	362.0	128.59	101.6	24.0	63.5	212.7	-	150.0	27.0	47.6	77.8			

מיסב צף מאפשר תנועה צירית של 4.8 מ"מ לכל כיוון ממרכז המיסב

ניתן להשיג בתים אלה מחומר יציקת פלדה PKB / PKEB

מידות המיסב הפנימי בעמ' 2-30



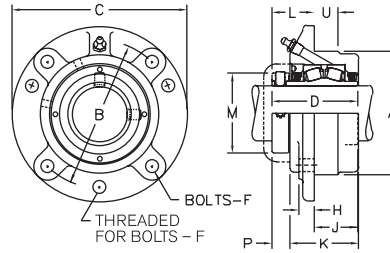
F-B22400H

קוטר ציר [מ"מ]	מק"ט		מידות [מ"מ]													עומסים [N]		מהירות מירבית [סל"ד]	מבנה בית
	קבוע	צף	A קבוע	A צף	B	C	D	F	G	H	L	M	N	P	Co	C			
1	F-B22416H	FE-B22416H	73.0	82.6	104.8	120.6	65.09	10	0.8	14.3	65.9	50.8	130.2	13.5	66100	51200	3500	3 חורים עגול	
	F-B224M25H	FE-B224M25H	73.0	82.6	104.8	120.6	65.09	10	0.8	14.3	65.9	50.8	130.2	13.5	66100	51200	3500		
25	F-B22419H	FE-B22419H	79.4	88.9	114.3	130.2	68.26	10	0.8	15.1	69.0	55.6	139.7	13.5	80500	60900	3000		
	F-B22420H	FE-B22420H	79.4	88.9	114.3	130.2	68.26	10	0.8	15.1	69.0	55.6	139.7	13.5	80500	60900	3000		
30	F-B224M30H	FE-B224M30H	79.4	88.9	114.3	130.2	68.26	10	0.8	15.1	69.0	55.6	139.7	13.5	80500	60900	3000		
	F-B22423H	FE-B22423H	87.3	95.2	127.0	149.2	73.02	12	0.8	15.9	73.8	63.5	158.8	16.7	93200	64900	2750		
35	F-B22424H	FE-B22424H	87.3	95.2	127.0	149.2	73.02	12	0.8	15.9	73.8	63.5	158.8	16.7	93200	64900	2750		
	F-B224M35H	FE-B224M35H	87.3	95.2	127.0	149.2	73.02	12	0.8	15.9	73.8	63.5	158.8	16.7	93200	64900	2750		
40	F-B22426H	FE-B22426H	100.0	108.0	139.7	161.9	79.38	12	0.8	15.9	80.2	69.8	171.4	16.7	127700	89800	2350		
	F-B22427H	FE-B22427H	100.0	108.0	139.7	161.9	79.38	12	0.8	15.9	80.2	69.8	171.4	16.7	127700	89800	2350		
45	F-B22428H	FE-B22428H	100.0	108.0	139.7	161.9	79.38	12	0.8	15.9	80.2	69.8	171.4	16.7	127700	89800	2350		
	F-B224M40H	FE-B224M40H	100.0	108.0	139.7	161.9	79.38	12	0.8	15.9	80.2	69.8	171.4	16.7	127700	89800	2350		
50	F-B22431H	FE-B22431H	108.0	114.3	146.05	169.9	79.38	12	1.6	17.5	81.0	74.6	177.8	16.7	147700	94300	2150		
	F-B22432H	FE-B22432H	108.0	114.3	146.05	169.9	79.38	12	1.6	17.5	81.0	74.6	177.8	16.7	147700	94300	2150		
55	F-B224M45H	FE-B224M45H	108.0	114.3	146.05	169.9	79.38	12	1.6	17.5	81.0	74.6	177.8	16.7	147700	94300	2150		
	F-B224M50H	FE-B224M50H	108.0	114.3	146.05	169.9	79.38	12	1.6	17.5	81.0	74.6	177.8	16.7	147700	94300	2150		
60	F-B22435H	FE-B22435H	123.8	123.8	161.92	187.3	84.14	16	2.4	17.5	86.5	85.7	196.8	19.8	197500	117400	1950		
	F-B22436H	FE-B22436H	123.8	123.8	161.92	187.3	84.14	16	2.4	17.5	86.5	85.7	196.8	19.8	197500	117400	1950		
65	F-B224M55H	FE-B224M55H	123.8	123.8	161.92	187.3	84.14	16	2.4	17.5	86.5	85.7	196.8	19.8	197500	117400	1950		
	F-B22439H	FE-B22439H	136.5	136.5	171.45	196.8	88.9	16	2.4	19	91.3	92.1	206.4	21.4	238000	139700	1750		
70	F-B22440H	FE-B22440H	136.5	136.5	171.45	196.8	88.9	16	2.4	19	91.3	92.1	206.4	21.4	238000	139700	1750		
	F-B224M60H	FE-B224M60H	136.5	136.5	171.45	196.8	88.9	16	2.4	19	91.3	92.1	206.4	21.4	238000	139700	1750		
75	F-B22443H	FE-B22443H	158.8	158.8	200.02	231.8	101.6	20	2.4	22.2	104.0	106.4	241.3	21.4	318000	185900	1500		
	F-B22444H	FE-B22444H	158.8	158.8	200.02	231.8	101.6	20	2.4	22.2	104.0	106.4	241.3	21.4	318000	185900	1500		
80	F-B22447H	FE-B22447H	158.8	158.8	200.02	231.8	101.6	20	2.4	22.2	104.0	106.4	241.3	21.4	318000	185900	1500		
	F-B22448H	FE-B22448H	158.8	158.8	200.02	231.8	101.6	20	2.4	22.2	104.0	106.4	241.3	21.4	318000	185900	1500		
85	F-B224M65H	FE-B224M65H	158.8	158.8	200.02	231.8	101.6	20	2.4	22.2	104.0	106.4	241.3	21.4	318000	185900	1500		
	F-B224M70H	FE-B224M70H	158.8	158.8	200.02	231.8	101.6	20	2.4	22.2	104.0	106.4	241.3	21.4	318000	185900	1500		
90	F-B224M75H	FE-B224M75H	158.8	158.8	200.02	231.8	101.6	20	2.4	22.2	104.0	106.4	241.3	21.4	318000	185900	1500		
	F-B22451H	FE-B22451H	187.3	187.3	241.3	219.1	111.12	20	4.8	34.9	115.9	127	290.5	23.8	403400	226800	1250		
95	F-B22455H	FE-B22455H	187.3	187.3	241.3	219.1	111.12	20	4.8	34.9	115.9	127	290.5	23.8	403400	226800	1250		
	F-B22456H	FE-B22456H	187.3	187.3	241.3	219.1	111.12	20	4.8	34.9	115.9	127	290.5	23.8	403400	226800	1250		
100	F-B224M80H	FE-B224M80H	187.3	187.3	241.3	219.1	111.12	20	4.8	34.9	115.9	127	290.5	23.8	403400	226800	1250		
	F-B224M85H	FE-B224M85H	187.3	187.3	241.3	219.1	111.12	20	4.8	34.9	115.9	127	290.5	23.8	403400	226800	1250		
105	F-B22459H	FE-B22459H	206.4	212.7	273.05	247.6	128.59	24	4	38.1	132.6	150	327.8	26.2	609400	351800	1100		
	F-B22463H	FE-B22463H	206.4	212.7	273.05	247.6	128.59	24	4	38.1	132.6	150	327.8	26.2	609400	351800	1100		
110	F-B22464H	FE-B22464H	206.4	212.7	273.05	247.6	128.59	24	4	38.1	132.6	150	327.8	26.2	609400	351800	1100		
	F-B224M90H	FE-B224M90H	206.4	212.7	273.05	247.6	128.59	24	4	38.1	132.6	150	327.8	26.2	609400	351800	1100		
115	F-B224M100H	FE-B224M100H	206.4	212.7	273.05	247.6	128.59	24	4	38.1	132.6	150	327.8	26.2	609400	351800	1100		

מיסב צף מאפשר תנועה צירית של 4.8 מ"מ לכל כיוון ממרכז המיסב

מיסב צף מידות G, L, P מוגדרות בקטלוג כמידות מינימום, כדי להגיע לערך מקסימום יש להוסיף 9.5 מ"מ

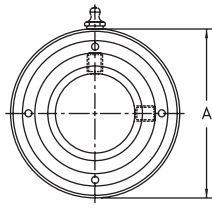
מידות המיסב הפנימי בעמ' 2-30



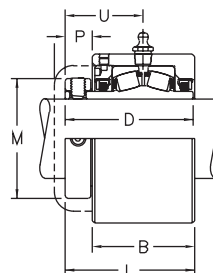
FC-B22400H

קוטר ציר [מ"מ]	מק"ט	מידות [מ"מ]													עומסים [N]		מהירות מירבית [סל"ד]
		A	B	C	D	F	H	J	K	L	M	P	U	Co	C		
1	FC-B22416H	76.2	92.08	111.1	65.09	8	11.1	31.8	51.6	32.5	50.8	13.5	15.9	66100	51200	3500	
25	FC-B224M25H	76.2	92.08	111.1	65.09	8	11.1	31.8	51.6	32.5	50.8	13.5	15.9	66100	51200	3500	
1-3/16	FC-B22419H	85.72	104.78	127.0	68.26	10	11.1	35.3	54.8	32.5	55.6	13.5	19	80500	60900	3000	
1-1/4	FC-B22420H	85.72	104.78	127.0	68.26	10	11.1	35.3	54.8	32.5	55.6	13.5	19	80500	60900	3000	
30	FC-B224M30H	85.72	104.78	127.0	68.26	10	11.1	35.3	54.8	32.5	55.6	13.5	19	80500	60900	3000	
1-7/16	FC-B22423H	92.08	111.12	133.4	73.02	10	12.7	35.3	56.4	37.3	63.5	16.7	19	93200	64900	2750	
1-1/2	FC-B22424H	92.08	111.12	133.4	73.02	10	12.7	35.3	56.4	37.3	63.5	16.7	19	93200	64900	2750	
35	FC-B224M35H	92.08	111.12	133.4	73.02	10	12.7	35.3	56.4	37.3	63.5	16.7	19	93200	64900	2750	
1-5/8	FC-B22426H	107.95	130.18	155.6	79.38	10	12.7	40.5	62.7	38.9	69.8	16.7	22.2	127700	89800	2350	
1-11/16	FC-B22427H	107.95	130.18	155.6	79.38	10	12.7	40.5	62.7	38.9	69.8	16.7	22.2	127700	89800	2350	
1-3/4	FC-B22428H	107.95	130.18	155.6	79.38	10	12.7	40.5	62.7	38.9	69.8	16.7	22.2	127700	89800	2350	
40	FC-B224M40H	107.95	130.18	155.6	79.38	10	12.7	40.5	62.7	38.9	69.8	16.7	22.2	127700	89800	2350	
1-15/16	FC-B22431H	114.3	136.52	161.9	79.38	10	14.3	40.5	62.7	38.9	74.6	16.7	22.2	147700	94300	2150	
2	FC-B22432H	114.3	136.52	161.9	79.38	10	14.3	40.5	62.7	38.9	74.6	16.7	22.2	147700	94300	2150	
45	FC-B224M45H	114.3	136.52	161.9	79.38	10	14.3	40.5	62.7	38.9	74.6	16.7	22.2	147700	94300	2150	
50	FC-B224M50H	114.3	136.52	161.9	79.38	10	14.3	40.5	62.7	38.9	74.6	16.7	22.2	147700	94300	2150	
2-3/16	FC-B22435H	127.0	152.4	181.0	84.14	12	14.3	42.1	64.3	42.1	85.7	19.8	25.4	197500	117400	1950	
2-1/4	FC-B22436H	127.0	152.4	181.0	84.14	12	14.3	42.1	64.3	42.1	85.7	19.8	25.4	197500	117400	1950	
55	FC-B224M55H	127.0	152.4	181.0	84.14	12	14.3	42.1	64.3	42.1	85.7	19.8	25.4	197500	117400	1950	
2-7/16	FC-B22439H	139.7	165.1	193.7	88.9	12	15.9	42.9	67.5	46.0	92.1	22.2	25.4	238000	139700	1750	
2-1/2	FC-B22440H	139.7	165.1	193.7	88.9	12	15.9	42.9	67.5	46.0	92.1	22.2	25.4	238000	139700	1750	
60	FC-B224M60H	139.7	165.1	193.7	88.9	12	15.9	42.9	67.5	46.0	92.1	22.2	25.4	238000	139700	1750	
2-11/16	FC-B22443H	161.92	190.5	222.2	101.6	16	19.0	51.6	80.2	50.0	106.4	21.4	31.8	318000	185900	1500	
2-3/4	FC-B22444H	161.92	190.5	222.2	101.6	16	19.0	51.6	80.2	50.0	106.4	21.4	31.8	318000	185900	1500	
2-15/16	FC-B22447H	161.92	190.5	222.2	101.6	16	19.0	51.6	80.2	50.0	106.4	21.4	31.8	318000	185900	1500	
3	FC-B22448H	161.92	190.5	222.2	101.6	16	19.0	51.6	80.2	50.0	106.4	21.4	31.8	318000	185900	1500	
65	FC-B224M65H	161.92	190.5	222.2	101.6	16	19.0	51.6	80.2	50.0	106.4	21.4	31.8	318000	185900	1500	
70	FC-B224M70H	161.92	190.5	222.2	101.6	16	19.0	51.6	80.2	50.0	106.4	21.4	31.8	318000	185900	1500	
75	FC-B224M75H	161.92	190.5	222.2	101.6	16	19.0	51.6	80.2	50.0	106.4	21.4	31.8	318000	185900	1500	
3-3/16	FC-B22451H	187.32	219.08	260.4	111.12	20	23.8	49.2	86.5	61.9	127.0	23.8	31.8	403400	226800	1250	
3-7/16	FC-B22455H	187.32	219.08	260.4	111.12	20	23.8	49.2	86.5	61.9	127.0	23.8	31.8	403400	226800	1250	
3-1/2	FC-B22456H	187.32	219.08	260.4	111.12	20	23.8	49.2	86.5	61.9	127.0	23.8	31.8	403400	226800	1250	
80	FC-B224M80H	187.32	219.08	260.4	111.12	20	23.8	49.2	86.5	61.9	127.0	23.8	31.8	403400	226800	1250	
85	FC-B224M85H	187.32	219.08	260.4	111.12	20	23.8	49.2	86.5	61.9	127.0	23.8	31.8	403400	226800	1250	
3-11/16	FC-B22459H	206.38	238.12	276.2	128.59	20	28.6	61.1	101.1	67.5	150.0	26.2	50.8	609400	351800	1100	
3-15/16	FC-B22463H	206.38	238.12	276.2	128.59	20	28.6	61.1	101.1	67.5	150.0	26.2	50.8	609400	351800	1100	
4	FC-B22464H	206.38	238.12	276.2	128.59	20	28.6	61.1	101.1	67.5	150.0	26.2	50.8	609400	351800	1100	
90	FC-B224M90H	206.38	238.12	276.2	128.59	20	28.6	61.1	101.1	67.5	150.0	26.2	50.8	609400	351800	1100	
100	FC-B224M100H	206.38	238.12	276.2	128.59	20	28.6	61.1	101.1	67.5	150.0	26.2	50.8	609400	351800	1100	

מידות המיסק הפנימי בעמ' 2-30

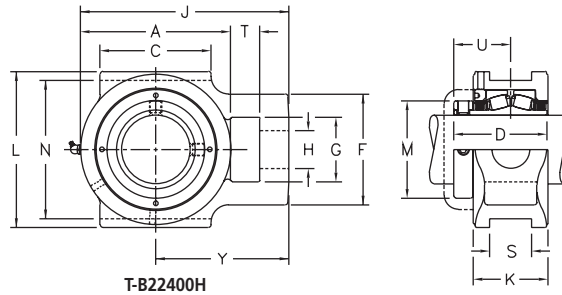


C-B22400H



קוטר ציר [אינץ'] [מ"מ]	מק"ט	מידות [מ"מ]							עומסים [N]		מהירות מירבית [סל"ד]
		A	B	D	L	M	P	U	סטטי C ₀	דינמי C	
1 25	C-B22416H	76.2	52.39	65.09	65.9	50.8	13.5	39.7	66 100	51 200	3500
	C-B224M25H	76.2	52.39	65.09	65.9	50.8	13.5	39.7	66 100	51 200	3500
1-3/16 1-1/4 30	C-B22419H	81.76	55.56	68.26	69.0	55.6	13.5	41.3	80 500	60 900	3000
	C-B22420H	81.76	55.56	68.26	69.0	55.6	13.5	41.3	80 500	60 900	3000
	C-B224M30H	81.76	55.56	68.26	69.0	55.6	13.5	41.3	80 500	60 900	3000
1-7/16 1-1/2 35	C-B22423H	87.3	57.15	73.02	73.8	63.5	16.7	45.2	93 200	64 900	2750
	C-B22424H	87.3	57.15	73.02	73.8	63.5	16.7	45.2	93 200	64 900	2750
	C-B224M35H	87.3	57.15	73.02	73.8	63.5	16.7	45.2	93 200	64 900	2750
1-5/8 1-11/16 1-3/4 40	C-B22426H	100.0	63.50	79.38	80.2	69.8	16.7	48.4	127 700	89 800	2350
	C-B22427H	100.0	63.50	79.38	80.2	69.8	16.7	48.4	127 700	89 800	2350
	C-B22428H	100.0	63.50	79.38	80.2	69.8	16.7	48.4	127 700	89 800	2350
	C-B224M40H	100.0	63.50	79.38	80.2	69.8	16.7	48.4	127 700	89 800	2350
1-15/16 2 45 50	C-B22431H	104.78	63.50	79.38	80.2	74.6	16.7	48.4	147 700	94 300	2150
	C-B22432H	104.78	63.50	79.38	80.2	74.6	16.7	48.4	147 700	94 300	2150
	C-B224M45H	104.78	63.50	79.38	80.2	74.6	16.7	48.4	147 700	94 300	2150
	C-B224M50H	104.78	63.50	79.38	80.2	74.6	16.7	48.4	147 700	94 300	2150
2-3/16 2-1/4 55	C-B22435H	115.09	65.09	84.14	84.9	85.7	19.8	52.4	197 500	117 400	1950
	C-B22436H	115.09	65.09	84.14	84.9	85.7	19.8	52.4	197 500	117 400	1950
	C-B224M55H	115.09	65.09	84.14	84.9	85.7	19.8	52.4	197 500	117 400	1950
2-7/16 2-1/2 60	C-B22439H	127.0	68.26	88.90	89.7	92.1	21.4	55.6	238 000	139 700	1750
	C-B22440H	127.0	68.26	88.90	89.7	92.1	21.4	55.6	238 000	139 700	1750
	C-B224M60H	127.0	68.26	88.90	89.7	92.1	21.4	55.6	238 000	139 700	1750
2-11/16 2-3/4 2-15/16 3 65 70 75	C-B22443H	149.22	80.96	101.60	102.4	106.4	21.4	61.9	318 000	185 900	1500
	C-B22444H	149.22	80.96	101.60	102.4	106.4	21.4	61.9	318 000	185 900	1500
	C-B22447H	149.22	80.96	101.60	102.4	106.4	21.4	61.9	318 000	185 900	1500
	C-B22448H	149.22	80.96	101.60	102.4	106.4	21.4	61.9	318 000	185 900	1500
	C-B224M65H	149.22	80.96	101.60	102.4	106.4	21.4	61.9	318 000	185 900	1500
3-3/16 3-7/16 3-1/2 80 85	C-B224M70H	149.22	80.96	101.60	102.4	106.4	21.4	61.9	318 000	185 900	1500
	C-B224M75H	149.22	80.96	101.60	102.4	106.4	21.4	61.9	318 000	185 900	1500
	C-B22451H	171.45	87.31	111.12	111.1	127.0	23.8	67.5	403 400	226 800	1250
	C-B22455H	171.45	87.31	111.12	111.1	127.0	23.8	67.5	403 400	226 800	1250
	C-B22456H	171.45	87.31	111.12	111.1	127.0	23.8	67.5	403 400	226 800	1250
80 85	C-B224M80H	171.45	87.31	111.12	111.1	127.0	23.8	67.5	403 400	226 800	1250
	C-B224M85H	171.45	87.31	111.12	111.1	127.0	23.8	67.5	403 400	226 800	1250

מידות המיסב הפנימי בעמ' 2-30



T-B22400H

קוטר ציר [מ"מ]	מק"ט	מידות [מ"מ]															עומסים [N]		מהירות מירבית [סל"ד]
		A	C	D	F	G	H	J	K	L	M	N	S	T	U	Y	Co	C	
1	T-B22416H	74.6	57.2	65.09	50.8	31.8	20.6	101.6	52.4	92.1	50.8	76.20	13.49	15.9	39.7	65.1	66100	51200	3500
25	T-B224M25H	74.6	57.2	65.09	50.8	31.8	20.6	101.6	52.4	92.1	50.8	76.20	13.49	15.9	39.7	65.1	66100	51200	3500
1-3/16	T-B22419H	82.6	63.5	68.26	58.7	36.5	22.2	112.7	55.6	104.8	55.6	88.90	13.49	15.9	41.3	71.4	80500	60900	3000
1-1/4	T-B22420H	82.6	63.5	68.26	58.7	36.5	22.2	112.7	55.6	104.8	55.6	88.90	13.49	15.9	41.3	71.4	80500	60900	3000
30	T-B224M30H	82.6	63.5	68.26	58.7	36.5	22.2	112.7	55.6	104.8	55.6	88.90	13.49	15.9	41.3	71.4	80500	60900	3000
1-7/16	T-B22423H	88.9	69.8	73.02	60.3	36.5	22.2	120.6	57.2	104.8	63.5	88.90	13.49	15.9	45.2	76.2	93200	64900	2750
1-1/2	T-B22424H	88.9	69.8	73.02	60.3	36.5	22.2	120.6	57.2	104.8	63.5	88.90	13.49	15.9	45.2	76.2	93200	64900	2750
35	T-B224M35H	88.9	69.8	73.02	60.3	36.5	22.2	120.6	57.2	104.8	63.5	88.90	13.49	15.9	45.2	76.2	93200	64900	2750
1-5/8	T-B22426H	104.8	82.6	79.38	81.0	49.2	28.6	144.5	63.5	120.6	69.8	101.60	17.46	19.0	48.4	92.1	127700	89800	2350
1-11/16	T-B22427H	104.8	82.6	79.38	81.0	49.2	28.6	144.5	63.5	120.6	69.8	101.60	17.46	19.0	48.4	92.1	127700	89800	2350
1-3/4	T-B22428H	104.8	82.6	79.38	81.0	49.2	28.6	144.5	63.5	120.6	69.8	101.60	17.46	19.0	48.4	92.1	127700	89800	2350
40	T-B224M40H	104.8	82.6	79.38	81.0	49.2	28.6	144.5	63.5	120.6	69.8	101.60	17.46	19.0	48.4	92.1	127700	89800	2350
1-15/16	T-B22431H	111.1	85.7	79.38	81.0	49.2	28.6	150.8	63.5	120.6	74.6	101.60	17.46	19.0	48.4	95.2	147700	94300	2150
2	T-B22432H	111.1	85.7	79.38	81.0	49.2	28.6	150.8	63.5	120.6	74.6	101.60	17.46	19.0	48.4	95.2	147700	94300	2150
45	T-B224M45H	111.1	85.7	79.38	81.0	49.2	28.6	150.8	63.5	120.6	74.6	101.60	17.46	19.0	48.4	95.2	147700	94300	2150
50	T-B224M50H	111.1	85.7	79.38	81.0	49.2	28.6	150.8	63.5	120.6	74.6	101.60	17.46	19.0	48.4	95.2	147700	94300	2150
2-3/16	T-B22435H	128.6	95.2	84.14	95.2	57.2	31.8	177.8	65.1	133.4	85.7	114.30	20.64	25.4	52.4	113.5	197500	117400	1950
2-1/4	T-B22436H	128.6	95.2	84.14	95.2	57.2	31.8	177.8	65.1	133.4	85.7	114.30	20.64	25.4	52.4	113.5	197500	117400	1950
55	T-B224M55H	128.6	95.2	84.14	95.2	57.2	31.8	177.8	65.1	133.4	85.7	114.30	20.64	25.4	52.4	113.5	197500	117400	1950
2-7/16	T-B22439H	141.3	101.6	88.90	104.8	63.5	34.9	198.4	68.3	149.2	92.1	130.18	26.99	31.8	55.6	127.8	238000	139700	1750
2-1/2	T-B22440H	141.3	101.6	88.90	104.8	63.5	34.9	198.4	68.3	149.2	92.1	130.18	26.99	31.8	55.6	127.8	238000	139700	1750
60	T-B224M60H	141.3	101.6	88.90	104.8	63.5	34.9	198.4	68.3	149.2	92.1	130.18	26.99	31.8	55.6	127.8	238000	139700	1750
2-11/16	T-B22443H	163.5	120.6	101.60	120.6	69.8	41.3	227.0	81.0	169.9	106.4	150.81	46.02	31.8	61.9	145.2	318000	185900	1500
2-3/4	T-B22444H	163.5	120.6	101.60	120.6	69.8	41.3	227.0	81.0	169.9	106.4	150.81	46.02	31.8	61.9	145.2	318000	185900	1500
2-15/16	T-B22447H	163.5	120.6	101.60	120.6	69.8	41.3	227.0	81.0	169.9	106.4	150.81	46.02	31.8	61.9	145.2	318000	185900	1500
3	T-B22448H	163.5	120.6	101.60	120.6	69.8	41.3	227.0	81.0	169.9	106.4	150.81	46.02	31.8	61.9	145.2	318000	185900	1500
65	T-B224M65H	163.5	120.6	101.60	120.6	69.8	41.3	227.0	81.0	169.9	106.4	150.81	46.02	31.8	61.9	145.2	318000	185900	1500
70	T-B224M70H	163.5	120.6	101.60	120.6	69.8	41.3	227.0	81.0	169.9	106.4	150.81	46.02	31.8	61.9	145.2	318000	185900	1500
75	T-B224M75H	163.5	120.6	101.60	120.6	69.8	41.3	227.0	81.0	169.9	106.4	150.81	46.02	31.8	61.9	145.2	318000	185900	1500
3-7/16	T-B22455H	187.3	139.7	111.12	123.8	73.0	47.6	254.0	87.3	198.4	127.0	173.02	46.02	39.7	67.5	160.3	403400	226800	1250
3-1/2	T-B22456H	187.3	139.7	111.12	123.8	73.0	47.6	254.0	87.3	198.4	127.0	173.02	46.02	39.7	67.5	160.3	403400	226800	1250
80	T-B224M80H	187.3	139.7	111.12	123.8	73.0	47.6	254.0	87.3	198.4	127.0	173.02	46.02	39.7	67.5	160.3	403400	226800	1250
85	T-B224M85H	187.3	139.7	111.12	123.8	73.0	47.6	254.0	87.3	198.4	127.0	173.02	46.02	39.7	67.5	160.3	403400	226800	1250
3-15/16	T-B22463H	225.4	177.8	128.59	133.4	79.4	47.6	301.6	101.6	244.5	150.0	219.08	52.37	41.3	77.8	188.9	609400	351800	1100
4	T-B22464H	225.4	177.8	128.59	133.4	79.4	47.6	301.6	101.6	244.5	150.0	219.08	52.37	41.3	77.8	188.9	609400	351800	1100
90	T-B224M90H	225.4	177.8	128.59	133.4	79.4	47.6	301.6	101.6	244.5	150.0	219.08	52.37	41.3	77.8	188.9	609400	351800	1100
100	T-B224M100H	225.4	177.8	128.59	133.4	79.4	47.6	301.6	101.6	244.5	150.0	219.08	52.37	41.3	77.8	188.9	609400	351800	1100

מידות המיסב הפנימי בעמ' 30-2